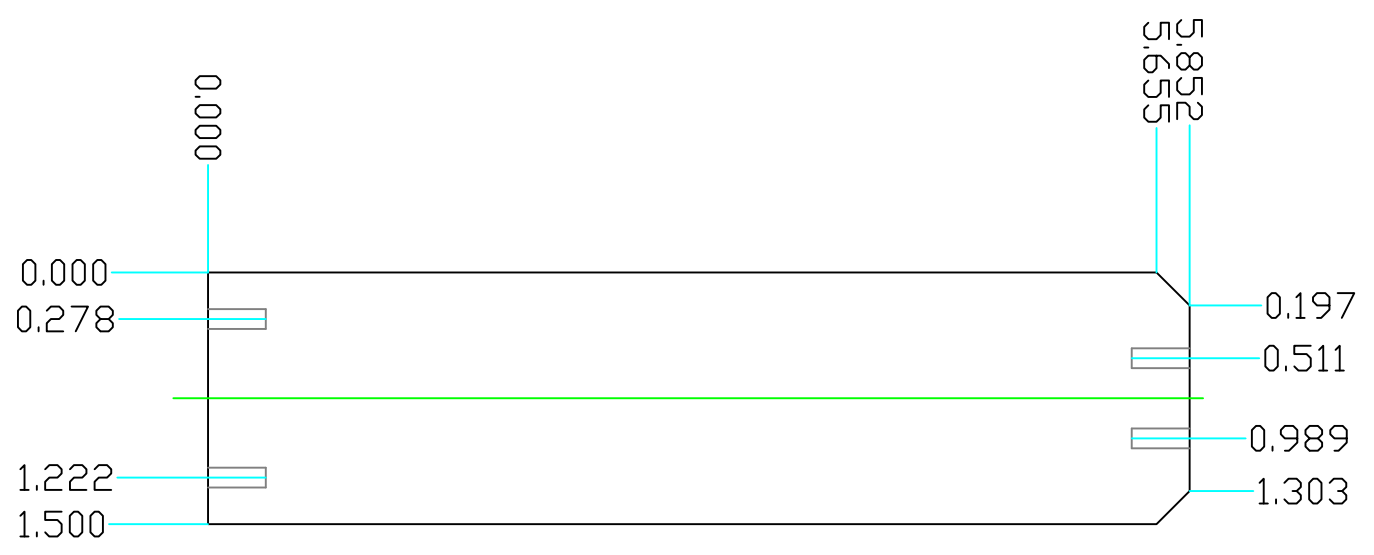
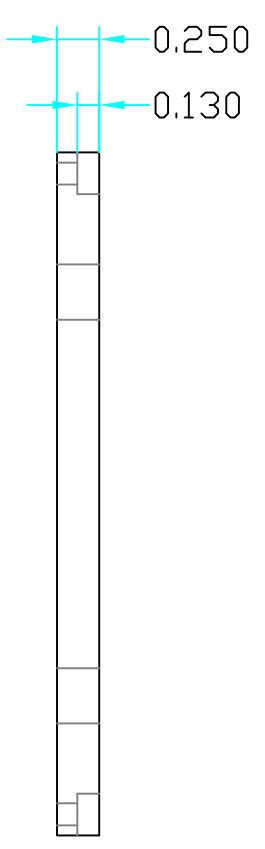
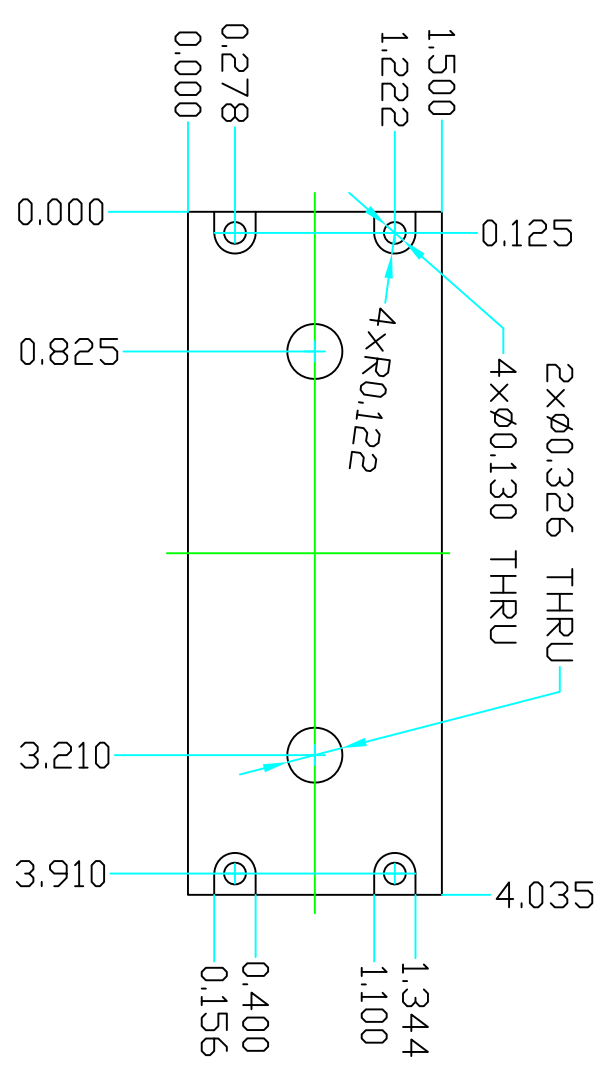
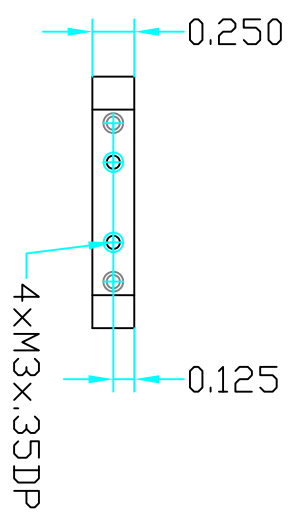


ZONE	REV	DESCRIPTION	REVISIONS	DATE	APPROVED



PART 2

PART 1

PARTS LIST		PART DESCRIPTION		REF. SHEET/DWG.
PART 2	2 EA	PLATE	ALUMINUM 6061	227.00.03.02
PART 1	2 EA	PLATE	ALUMINUM 6061	227.00.03.02

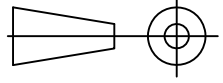
UNLESS OTHERWISE SPECIFIED		FABRICATION TOLERANCES		MACHINING TOLERANCES	
12 TO 60	±0.13	BELOW 12	±0.005	XXX	±0.002
60 TO 180	±0.20	BELOW 18	±0.005	XXX	±0.004
OVER 180	±0.30	OVER 18	±0.005	XXX	±0.004
		OVER 48	±0.005	XXX	±0.004
		OVER 180	±0.005	XXX	±0.004

SURFACE TEXTURE		TOLERANCES ARE NOT ACCUMULATIVE	
63	✓		

- DIMENSIONS ARE IN INCHES.
- MACHINE SURFACES TO BE FLAT, SQUARE, PARALLEL & CONCENTRIC BELT 12 WITHIN .001 TIR 5 INCHES OR .001 TIR AS APPLICABLE.
- MARK ALL DETAILS EXCEPT COMMERCIAL PARTS WITH DWG.
- ITEM NUMBER.
- BREAK ALL SHARP CORNERS .01 x 45° CHAMFER.
- FILLET'S SHOWN SHARP = 1/4 RAIL.
- FINISH ALL SURFACES CLASS 20 THREAD, MIN DEPTH .15 x DIM. ANGLE TOLERANCE 30.1°.
- CSKING BEVEL & BEVEL TILES 1/16 x 45°.
- CENTERS PERMISSIBLE.
- DO NOT SCALE DRAWING.
- ALL WELDING TO CONFORM TO LATEST AWS STANDARDS.

REV	DATE	BY	CHKD	APP'D	TITLE
1	05/06/22	AD	KH	KH	DFPS SETUP 4X4 BRIDGE PLATES
2					
3					
4					
5					
6					
7					
8					
9					
10					

REV	DATE	BY	CHKD	APP'D	TITLE
1	05/06/22	AD	KH	KH	DFPS SETUP 4X4 BRIDGE PLATES
2					
3					
4					
5					
6					
7					
8					
9					
10					



Open Source Instruments Inc.

REV	DATE	BY	CHKD	APP'D	TITLE
1	05/06/22	AD	KH	KH	DFPS SETUP 4X4 BRIDGE PLATES
2					
3					
4					
5					
6					
7					
8					
9					
10					

6 5 4 3 2 1

A B C D

A B C D